

# DOGGER BANK



## TEESSIDE A & B

# Statement of Community Consultation published in accordance with Section 47(6) of the Planning Act 2008

In May 2012, Forewind published a Statement of Community Consultation (SoCC) for Dogger Bank Teesside – an offshore wind development which comprised up to four offshore wind farms.

Forewind has now confirmed that the optimum consenting strategy for Dogger Bank Teesside is to split the development into two **separate** development consent order applications – each comprising two offshore wind farms. These applications will be called “Dogger Bank Teesside A & B” and “Dogger Bank Teesside C & D”. Forewind is publishing this updated SoCC explicitly for the proposed Dogger Bank Teesside A & B development. A separate SoCC will be published for the proposed Dogger Bank Teesside C & D development at a later date.

## Forewind is publishing this SoCC for the proposed Dogger Bank Teesside A & B development and its associated infrastructure.

This statement explains how we will consult with the local community including residents living within a specified distance of the project, the general public, community groups, local businesses, technical consultees and land owners, as well as others who work in or use the area, both offshore and onshore.

Pre-application consultation provides the main opportunity for the local community to engage with Forewind and help shape the proposals so it is important that you provide any comments or information about any part of the Dogger Bank Teesside A & B proposal during this consultation process.

## Forewind and the Dogger Bank Zone

Forewind is a consortium comprising four leading international energy companies which joined forces to successfully bid for the right to develop the Dogger Bank Zone as part of The Crown Estate’s third round of UK offshore wind farm leasing (Round 3).

The Dogger Bank Zone is in the North Sea, located between 125 and 290 kilometres off the UK coast. It extends over an area of approximately 8660 km<sup>2</sup> (approximately the same size as North Yorkshire) with its easternmost outer limit aligned to the UK continental shelf, as defined by the UK Hydrographic Office. The water depth ranges from 18 to 63 metres.

Forewind has the objective to achieve development consent for an agreed target installed capacity of 9 gigawatts (GW) of offshore wind farm projects by 2020. To ensure that the work associated with meeting this objective is managed effectively, and to more evenly distribute demands on stakeholders and the supply chain, Forewind has proposed to develop the zone sequentially. Its focus is now on the first six wind farms which together total 7.2GW.

### Dogger Bank Teesside A & B

Dogger Bank Teesside A & B is an offshore wind farm development with an installed capacity of up to 2.4GW, and the potential to generate around 8 terawatt hours (TWh) of green power every year, which is equivalent to the electricity used annually by approximately 1.8 million British homes<sup>1</sup>.

Dogger Bank Teesside A & B will comprise two offshore wind farms – each with a maximum installed capacity of up to 1.2GW – and both will connect into the national grid at the existing Lackenby substation near the south western corner of the Wilton complex, in Redcar and Cleveland.

Dogger Bank Teesside A & B will comprise:

#### Offshore:

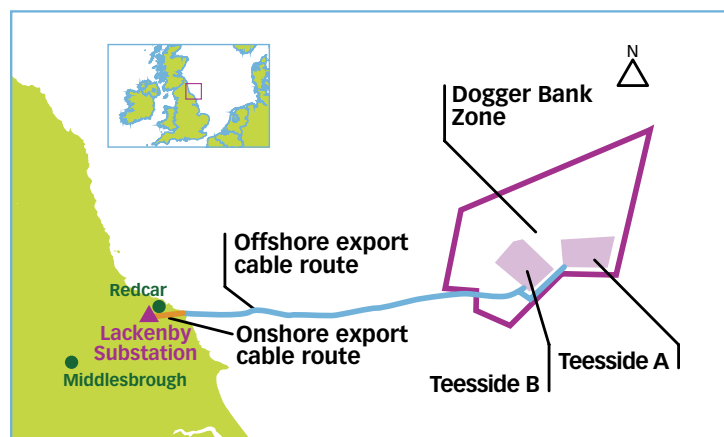
- Up to 400 wind turbines with supporting tower structures, foundations fixed to the seabed and associated support and access structures;
- Two offshore high voltage direct current (HVDC) converter platforms with foundations fixed to the seabed;
- Up to eight offshore collector platforms with foundations fixed to the seabed;
- Up to four offshore accommodation or helicopter platforms with foundations fixed to the seabed and including facilities for

- vessels and helicopters for operations and maintenance activities;
- Offshore platforms may be co-joined to create a combined platform, resulting in a combined offshore platform comprising two or more of the platform structures described above;
- Up to ten offshore meteorological monitoring stations with foundations fixed to the seabed;
- Subsea cables between the elements of offshore infrastructure described above;
- Offshore export cables carrying electricity from the offshore HVDC converter platforms to the Teesside coast; and
- Ancillary works including: cable and pipeline crossing structures; protection against foundation scour and subsea damage, cable protection measures and vessel-mooring facilities.

#### Onshore:

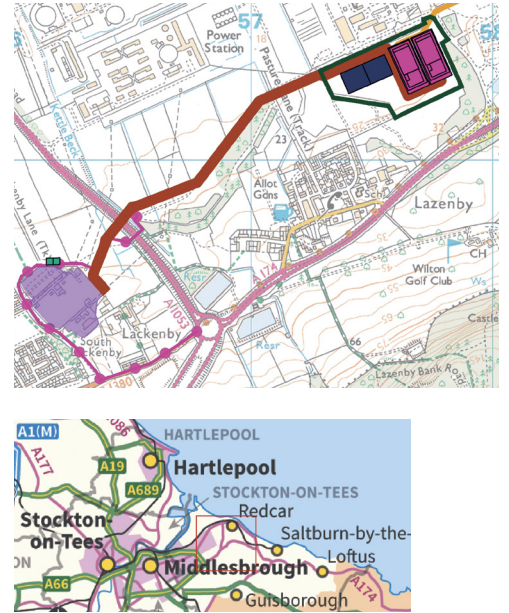
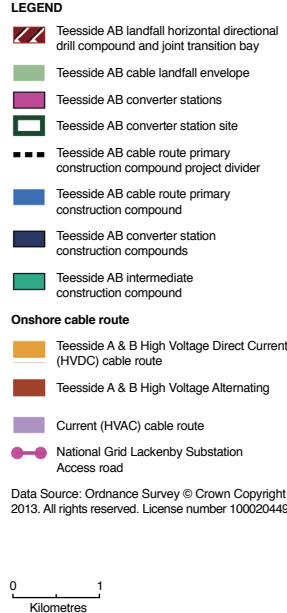
- Underground cable transition joint bays at the landfall, located between Redcar and Marske-by-the-Sea on the Teesside coast;
- Underground HVDC export cables running approximately seven kilometres from the landfall to the two converter stations;
- Two converter stations located within the Wilton complex, with associated access, fencing, landscaping and drainage;
- Underground high voltage alternating current (HVAC) export cables running approximately two kilometres from the converter stations to the existing National Grid substation at Lackenby, where connection works will be carried out;
- Ancillary works including: temporary working areas, permanent and temporary access roads, and service corridors.

An illustration of the location of the development is identified below.



Location of Dogger Bank Teesside A & B

1. This calculation assumes a capacity factor of 40% and uses an average British home electricity consumption of 4.7 megawatt hours per annum.



**Proposed location of onshore infrastructure and construction works**

**Potential impacts**

The development of Dogger Bank Teesside A & B would be a major step towards achieving the Government’s renewable energy targets and improving energy security for the UK. It will also generate construction, operations and maintenance opportunities at a local and national level.

There will be some impacts for the local community, but Forewind intends to minimise them wherever it is reasonably feasible. For example no new overhead lines are proposed as part of the development. These impacts are expected to include (but are not restricted to) temporary noise and disruption during construction, permanent visual impacts resulting from the construction of the onshore converter stations, increased marine traffic during construction and operation and limits or exclusions on movement through the offshore wind farms.

**The consenting process**

Offshore wind farms with a capacity of more than 100MW are classified as nationally significant infrastructure projects under Section 14 of the Planning Act 2008 and require a development consent order (DCO) before they can be built. The Planning Inspectorate is the government agency responsible for examining applications for DCOs, which authorise nationally significant infrastructure projects. Therefore Forewind will submit an application for a DCO for ‘Dogger Bank Teesside A & B’ to the Planning Inspectorate for examination.

On submission of the application, the Planning Inspectorate will firstly decide whether or not the application should be accepted. If accepted, it will proceed to examine the application, and following the completion of the examination process will then recommend to the Secretary of State for Energy and Climate Change whether or not the application should be approved. In deciding whether or not to approve the application, the Secretary of State must have regard to the relevant national policy statements, which set out the need

for new energy infrastructure and the issues to be considered in determining an application. For this project the relevant national policy statements are EN1 – Overarching Energy, EN3 – Renewable Energy Infrastructure, and EN5 – Electricity Networks. If the Secretary of State approves the application, the DCO will be made, authorising the construction and operation of the development.

**Consultation objectives**

The objectives of the Dogger Bank Teesside A & B community consultation process are to:

- Provide information to all sections of the local community in a clear and concise way;
- Create a process through which local people can comment on the formal proposals;
- Ensure that Forewind understands the views of the local community so that they can be considered during the development process; and
- Provide feedback on how community consultation has influenced the proposal.

**Phases of consultation**

The consultation for Dogger Bank Teesside A & B is being carried out in two formal phases:

- **Phase One:** Held in summer 2012, consultation on the site selection process to date for all four Teesside offshore wind farms and early preliminary environmental information. This phase of consultation is now complete.
- **Phase Two:** This phase – final formal consultation before the application is submitted, on the detailed proposals for Dogger Bank Teesside A & B, including consultation on a draft Environmental Statement.

To inform the detailed proposals presented in phase two of the formal consultation, in between the two formal phases of consultation (May 2012 and November 2013), Forewind has undertaken additional consultation with a range of interested parties.

**Phase One – the site selection process for all four Dogger Bank Teesside projects**

During Phase One, Forewind consulted on the site selection work done to May 2012, including the

process to narrow down the locations of the offshore wind farms, landfall and converter station(s). Forewind set out why the preferred locations were selected and what further refinement was required. Forewind asked the local community to provide any comments or information on the site selection work that Forewind should consider when choosing the precise locations for onshore and offshore elements of the project.

Consultation activities included a series of public exhibitions held at Kirkleatham Museum, Redcar; Redcar Central Library, Kirkleatham Street; and Lazenby Village Hall between 24 and 26 May 2012. Consultation documents (Preliminary Environmental Information 1) were also made available at a number of locations, including Grangetown Library, Kirkleatham Museum, Laburnum Road Library, Marske Library, Redcar Central Library, The Wilton Centre, and on the Forewind website [www.forewind.co.uk](http://www.forewind.co.uk). These documents are still available on request.

These consultation activities constituted the Phase One consultation for all four Dogger Bank Teesside wind farms and all responses received during this phase are being considered in the development of both the Dogger Bank Teesside A & B and the Dogger Bank Teesside C & D DCO applications.

**Phase Two – (this phase) the detailed proposals for Dogger Bank Teesside A & B**

**Phase Two will start on 4 November 2013 and any responses must be received by Forewind by 20 December 2013**

During this period, Forewind will ask the local community for comments on the detailed proposals for Dogger Bank Teesside A & B. Forewind will provide a detailed explanation of the proposed development, potential impacts and proposed mitigation measures by means of a draft Environmental Statement.



## Public exhibitions

Public exhibitions detailing the proposals and enabling community feedback will be held at:

Venue	Time and Date (2013):
<b>The Hub</b> 28–29 Esplanade, Redcar TS10 3AE	2.00pm to 7.30pm Friday 22 November
<b>Lazenby Village Hall</b> High Street, Lazenby TS6 8DU	10.30am to 4.30pm Saturday 23 November
<b>Zetland Park Methodist Church</b> The Crescent, Redcar TS10 3AU	11.00am to 6.00pm Monday 25 November

**This final formal consultation will start on 4 November 2013 and any responses must be received by Forewind by 20 December 2013.**

## Consultation documents

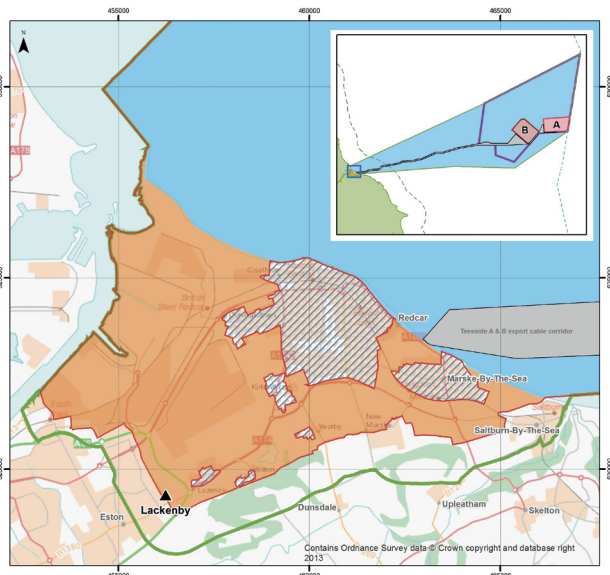
Consultation documents will also be available to inspect free of charge on the Forewind website [www.forewind.co.uk](http://www.forewind.co.uk) and at the venues listed below from **4 November 2013 until 20 December 2013**.

Venue	Opening hours	Format
<b>Grangetown Library</b> 172 Birchington Avenue Middlesbrough TS6 7LP	Mon: 9.00am to 12.30pm / 1.30pm to 6.00pm, Tues, Thurs and Fri: 9.00am to 12.30pm / 1.30pm – 5.00pm, Sat: 9.00am to 12.30pm, Wed and Sun: Closed	Hard copy

Venue	Opening hours	Format
<b>Guisborough Library</b> 90 Westgate Guisborough TS14 6AP	Mon and Tues: 9.00am to 7.00pm, Wed: 9.00am to 6.00pm, Thurs and Fri: 9.00am to 5.00pm, Sat 9.30am to 12.30pm Sun: Closed	Hard copy
<b>Kirkleatham Museum</b> Kirkleatham, Redcar TS10 5NW	Mon: Closed except bank holidays, Tues to Sun: 10.00am to 4.00pm. Museum is staffed 7 days a week 9.00am to 5.30pm for telephone and email enquiries	DVD
<b>Laburnum Road Library</b> 338 Laburnum Road, Redcar TS10 3QS	Mon and Fri: 9.00am to 12.30pm / 1.30pm to 4.00pm, Tues: 9.00am to 12.30pm / 1.30pm to 7.00pm, Wed: 9.00am to 12.30pm / 1.30pm to 5.00pm, Sat: 9.30am to 12.30pm, Thurs and Sun: Closed	Hard copy
<b>Marske Library</b> Windy Hill Lane Marske-by-the-Sea Redcar TS11 7BL	Mon, Thurs and Fri: 9.00am to 12.30pm / 1.30pm to 5.00pm Tues: 9.00am to 12.30pm / 1.30pm to 6.30pm, Wed: 9.00am to 1.30pm Sat: 10.00am to 1.30pm Sun: Closed	Hard copy

Venue	Opening hours	Format
<b>Mobile Library</b> c/o Roseberry Library	For locations and times contact Roseberry Library on 01642 483326	DVD
<b>Redcar Central Library</b> Redcar & Cleveland House, Kirkleatham Street, Redcar TS10 1RT	Mon, Tues, Wed and Fri: 9.00am to 6.00pm, Thurs: 9.00am to 5.00pm, Sat: 9.00am to 12.30pm, Sun: Closed	Hard copy
<b>Roseberry Library</b> Roseberry Road, Redcar TS10 4NY	Mon: 9.00am to 12.30 / 1.30pm to 6.30pm, Tues and Thurs: 9.00am to 12.30 / 1.30pm to 5.00pm, Wed and Sun: Closed, Fri: 9.00am to 12.30pm / 1.30pm to 4.00pm, Sat: 9.30am to 12.30pm	Hard copy
<b>Saltburn Library</b> Windsor Road Saltburn-by-the-Sea TS12 1JW	Mon: 9.30am to 12.30pm / 1.30pm to 6.30pm, Tues: 1.30pm to 5.00pm, Wed, Thurs and Fri: 9.30am to 12.30pm / 1.30pm to 5.00pm, Sat: 10.00am to 12.30pm / 1.30 to 4.00pm, Sun: 12 noon to 4.00pm	Hard copy
<b>The Wilton Centre</b> Wilton, Redcar TS10 4RF	Monday to Friday: 8.00am to 5.15pm, Sat and Sun: Closed	DVD

Any response to this consultation will need to reach Forewind before the consultation response deadline of **20 December 2013** to ensure that it is considered.



### LEGEND

- Dogger Bank Teesside A
- Dogger Bank Teesside B
- Dogger Bank Round 3 Zone
- Teesside A & B export cable corridor
- National Grid substation, Teesside
- Onshore scoping area
- Offshore scoping area
- Consultation area
- Area excluded from scoping envelope
- Scoping envelope
- UK International boundary
- 12nm Territorial boundary

---

## How to respond to consultation

Submit your comments on the proposal to:

---

**Email** [info@forewind.co.uk](mailto:info@forewind.co.uk)

---

**Post** **Freepost RSLY-HK GK-HEBR**  
**Forewind**  
**Davidson House**  
**Forbury Square**  
**Reading**  
**RG1 3EU**

### Environmental Impact Assessment

Dogger Bank Teesside A & B is a development which requires an Environmental Impact Assessment for the purposes of Schedule 2 to the Infrastructure Planning (Environmental Impact Assessment) Regulations 2009. At Phase One, Forewind consulted on Preliminary Environmental Information 1 for Dogger Bank Teesside. At Phase Two, Forewind will consult on a draft Environmental Statement (including a non-technical summary) for Dogger Bank Teesside A & B.

### Who we will consult

This process (both Phases One and Two) is designed to engage with the local communities, both onshore and offshore, which may be affected by Dogger Bank Teesside A & B. The onshore consultation area has been updated since the SoCC was first published, and is shown below.

Forewind will send newsletters and direct invitations to the consultation events to the following people:

- Community groups or organisations with postal addresses in the consultation area, or who are active within the consultation area;
- Individuals with postal addresses in the consultation area who have asked Forewind to send them information directly;
- Local Ward, Parish councils and neighbourhood officers wholly or partly within the consultation area;
- District and county councillors with wards/ divisions wholly or partly within the consultation area;
- local, national and international fishing communities, through representative authorities and organisations who are active in the area; and
- Members of UK and European Parliaments with local constituencies wholly or partly within the consultation area.

The consultation area for Dogger Bank Teesside A & B is the same as the consultation area for Dogger Bank Teesside C & D. Consultees will receive information about both developments with consultation planned for Dogger Bank Teesside C & D in late 2014. Forewind will endeavour to make it clear where information applies to one or both developments. Anyone else who may be interested in the project is welcome to take part in the community consultation. Events will also be advertised in local newspapers, marine journals and on the Forewind website.

Forewind is engaging with the local, national and international fishing communities directly to ensure that they are up to date with the development proposals and are given the opportunity to provide comments. Details of this consultation process have been published separately in Forewind's Fisheries Liaison Plan (updated in April 2013) which is available on the Forewind website [www.forewind.co.uk](http://www.forewind.co.uk).

Members of the fishing community are also welcome to engage in the community consultation process.

Forewind will work with the Planning Inspectorate and the relevant UK and EU governments to ensure that appropriate international stakeholders are consulted.

### The methods we will use to consult

**Public exhibitions** – Anyone with an interest in Dogger Bank Teesside A & B is welcome to attend the public exhibitions. In addition to the information panels and printed materials, Forewind staff will be at the exhibitions to answer questions. Visitors will be asked to submit feedback and comments via questionnaires.

**Newsletters and factsheets** – Forewind produces zone level newsletters and subject-specific factsheets at key stages of the project. All previous editions are available on the Forewind website or in hard copy on request.

**Lodging of consultation documents in public** – All preliminary environmental information documents, questionnaires, factsheets and newsletters will be lodged at council libraries and other council buildings, as detailed. They will also be available to download from the Forewind website [www.forewind.co.uk](http://www.forewind.co.uk).

### What we will do with responses to consultation

All responses received during both phases of consultation will be carefully considered. Details of any responses received during consultation and the account taken of those responses will be included in the Consultation Report.

This will be submitted with the application for a DCO to the Planning Inspectorate and will therefore be made public. For this reason, any responses to Forewind must not contain personal information about any third party without their consent. This is to ensure compliance with the Data Protection Act.

The Consultation Report, lodged with each application, will demonstrate how Forewind has complied with the consultation requirements of the Planning Act 2008 and will be considered by the Planning Inspectorate, both when determining whether to accept the application, and then in examining the application.

### Other consultations

This community may be consulted by the promoters of other nationally significant infrastructure projects. Where possible, Forewind will avoid scheduling consultation events that overlap with these other consultation exercises. Currently the only other nationally significant infrastructure projects listed on the Planning Inspectorate's website for this area are 'Dogger Bank Teesside C & D' by Forewind and 'Yorkshire Potash Pipeline', by York Potash Limited.

---

### How to get in touch with us or obtain more detailed information

---

**Website** [www.forewind.co.uk](http://www.forewind.co.uk)

---

**Email** [info@forewind.co.uk](mailto:info@forewind.co.uk)

---

**Freephone** 0800 975 5636

---

**Post** **Freepost RSLY-HK GK-HeBR**  
**Forewind**  
**Davidson House**  
**Forbury Square**  
**Reading**  
**RG1 3EU**

---